

10th International Architecture Exhibition Venice 2006

Cities, architecture and society

**Venice, Arsenale and Giardini della Biennale
Sept 10th – Nov 19th 2006**

**The Federal Republic of Germany is participating with the following contribution in the German Pavilion:
CONVERTIBLE CITY – Modes of densification and dissolving boundaries**

Press conference 2nd June 2006 – Press folder content

Memorandum of the General Commissioners Armand Gruentuch and Almut Ernst

Selected projects (sample)

Biographical information and selected works from the General Commissioners

Parties involved in the German Contribution

Fact sheet of the 10th International Architecture Exhibition

General concept of the 10th International Architecture Exhibition by Richard Burdett

CD with texts and image material

10th International Architecture Exhibition Venice 2006

Cities, architecture and society

Venice, Arsenale and Giardini della Biennale
Sept 10th – Nov 19th 2006

**The Federal Republic of Germany participates with the following contribution in the German Pavilion:
CONVERTIBLE CITY – Modes of densification and dissolving boundaries**

Memorandum

Convertible City is an expression of the continuity and conversion of urban space

Convertible City is a call for maintaining the diversity of city life

Convertible City is a demand for the sustainable use of core cities

Convertible City is an alternative to urban sprawl encroaching on natural areas

Convertible City is the dissolution of boundaries in the urban habitat

Convertible City is a call for creative appropriation of metropolitan areas

Convertible City is the expression of a positive attitude to urban life

Convertible City is an inspiration and stimulation for new concepts of living

Concept

„Cities. Architecture and Society“ - The 10th International Architecture Exhibition Venice 2006, directed by Richard Burdett, highlights the changes in urban life at the beginning of the 21st century. At present, more than half of the world's population lives in cities. Urban life is marked by the varied interaction of economic, social, geographical, political, cultural and creative processes of transformation.

Contrary to the rapidly expanding new metropolises in Asia and Latin America, the form of the European city is still largely determined by tradition and history. The restructuring of industrial society as well as demographic changes and an increasingly pluralistic society present distinct challenges to architecture and urban planning in Germany particularly with regard to existing urban structures. Meeting these challenges means discovering new opportunities for interaction between past, present and future.

The German contribution examines stimulating conversions in existing urban space situations that enrich the dynamics and creativity of city life. Exemplary projects illustrate the exciting tensions that densification and transformation exert on architecture and the urban fabric as well as the sustainable use of the available potential of a “vertically open” periphery for new working and living environments.

With an emphasis on transformation and conversion in the urban context, the exhibition reveals a shift in perception within the sphere of architecture. Focusing on the hitherto rather unattractive tasks of re-building and re-use contributes to their re-evaluation in terms of design and content not only amongst experts but also in the public consciousness.

Projects

The exhibition presents projects that are designed to meet the requirements of a constantly changing society and cultural landscape by change of use, transformation and re-projection. These include planned and completed projects by both well-known and less well-known architects, urban planners, landscape architects and artists. The exhibits demonstrate new prospects for architecture via flexibility of thinking and sustainability concepts. They also allow visitors to the exhibition interesting insights into the diversity of creative activity in Germany's urban spaces.

Around 30 selected projects are introduced in their urban context. Assigned to three thematic groups, they reflect exemplary forms of conversion and densification of city space.

RE-LATE

Focuses on the architectural additions to existing structures which - through superimposition, shifting and penetration - are expanded, connected and redefined.

RE-PLAY

Focuses on playful and spontaneous modes of perception and exploitation of urban space. This can be by the projection of city surfaces, as well as the activation of urban voids.

RE-CHARGE

Focuses on the dissolution and redefinition of outdated usage forms and function guidelines for existing buildings. This includes re-evaluating old architectural and planning legacies through conversion and re-assignment.

Design

On entering the German pavilion visitors experience these themes through large-scale images as a scene of urban vitality and architectural variety. The city is staged as an inspiring field of possibilities.

In contrast to the bustling main hall, the side wings offer a calm and inviting atmosphere for a more in-depth contemplation of the individual projects on display.

Central to the exhibition is a new stairway construction leading from the main space up to the roof level of the pavilion. An added *altana* – a typical Venetian architectural element – utilizes the elevated position of the German pavilion to create a viewing platform and meeting place. This structural addition of the stairway defines the German pavilion as a transitory space and activates the existing roof area as a novel location with surprising perspectives.

Thus the pavilion serves not only as casing or container for the exhibits, but becomes an exhibit in its own right. The superimposition of the historic edifice with the temporary structure becomes a landmark for the duration of the biennale.

Publication

The exhibition catalogue is published in the form of a special issue of the German architecture magazine „archplus“ especially designed and edited by the general commissioners, Armand Grüntuch and Almut Ernst. The 120 page, bilingual publication (in German and English) not only documents the exhibition projects but also a collection of interdisciplinary contributions that deal critically with the phenomenon of urban life. By acting as guest editors for the magazine, the exhibition's core principle of converting existing structures is deliberately transferred to the catalogue.

General Commissioners of the Federal Republic of Germany

Armand Gruentuch and Almut Ernst

Berlin, June 2006



CONVERTIBLE CITY
Venice

Selected Projects in the German Pavillon (Sample)

Living [+] Bogenallee 10-12
Hamburg

blauraum architekten
www.blauraum.de

Badeschiff
Berlin
Winterbadeschiff
Berlin

Susanne Lorenz and AMP arquitectos
with Gil Wilk
Gil Wilk Architekten with Thomas Freiwald
www.arena-berlin.de

Albertinum Dresden,
Refurbishment and new building of the central depot
Dresden

Staab Architekten
www.staab-architekten.com

Superimposition 'Symbiont'
Merzig

FloSundK architektur+urbanistik
www.flosundk.de

Idea laboratory central station /
Project 'Dachfußball'
Frankfurt am Main

bb22 urbane projekte
www.bb22.net

Lebe - Deine - Stadt (*Live your City*)
Kaiserslautern

mess (mobile einsatztruppe stadt und stil)
www.lebe-deine-stadt.de



© blauraum architekten



© Giovanni Castelli

Living [+] Bogenallee 10-12
Hamburg

blauraum architekten
www.blauraum.de



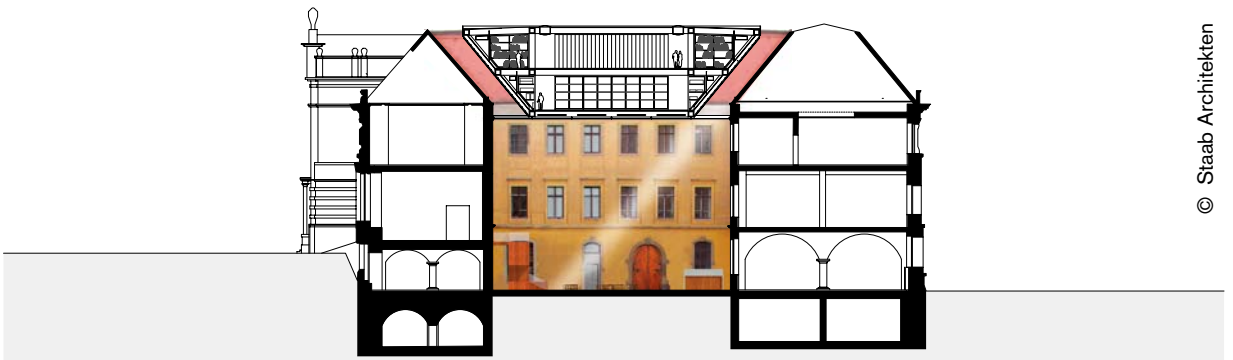
© Florian Bolik



© arena

Badeschiff
Winterbadeschiff
Berlin

Susanne Lorenz and AMP architectos with Gil Wilk
Gil Wilk Architekten with Thomas Freiwald
www.arena-berlin.de



© Staab Architekten



© Staab Architekten

Albertinum Dresden, Refurbishment and new building of the central depot
Dresden

Staab Architekten
www.staab-architekten.de







Armand Gruentuch, Architect BDA

born 1963, Riga (Latvia)

1989 diploma with special award at RWTH Aachen

1985 DAAD-scholarship at the University of Venice IUAV

1987-1989 working experience at Norman Foster, London

Since 1991 office with Almut Ernst

1991-1995 teaching at the Hochschule der Künste Berlin,

Department of Architecture

**Awards (selection):**

Hans-Schaefers-Preis 1996

Deubau Junior Award 2002

DuPont Benedictus Award 2003

Brandenburgischer Architekturpreis 2005

Stiftungspreis „Lebendige Stadt“ 2005

Deutscher Bauherrenpreis 2006

Almut Ernst, Architect BDA

born 1966, Stuttgart (Germany)

1991 Diploma at the University of Stuttgart, Architecture and Urban Development

1989 DAAD-scholarship at the Architectural Association in London

1988-1989 working experience at Alsop & Lyall, London

Since 1991 office with Armand Gruentuch

1993 - 1997 teaching at the Hochschule der Künste Berlin,

Department of Architecture and Visual Communication

More information on projects, exhibitions and publications: www.gruentuchernst.de

Selected projects Gruentuch Ernst



Apartment and commercial building Hackescher Markt Berlin, completion 2000
(© Jörg Hempel and Christian Gahl)



Office building Hamburg-Neumühlen, completion 2002
(© Oliver Heissner and Gruentuch Ernst Architects)



Hotel at the Flensburg fjord, competition 2006 - 1. Preis
(© Gruentuch Ernst Architects)



Extension of the Bruno-H. Bürgel elementary school, Berlin, completion 2006
(© Gruentuch Ernst Architects)

Parties involved

Organiser:

Bundesministerium für Verkehr, Bau- und Stadtentwicklung

General Commissioners:

Armand Gruentuch and Almut Ernst

Project office:

Gruentuch Ernst Architekten

Hackescher Markt 2-3

10178 Berlin

phone: +49 (0)30 308 77 88

fax: +49 (0)30 308 77 87

Project team:

Production management: Arno Löbbecke and Julia Wolter

Project management: Lukas Feireiss

Visualisation: Alessio Fossati

English editor: Sophie Lovell

Press and Communication (national): Beate Engelhorn

Press and Communication (international): Sybille Fanelisa with Eleonora Fassina

Documentation: Sandy Lindner

Grafic / catalogue-layout / website:

Gruentuch Ernst with Peter Dorén (Dorén + Köster) and Stilkonzil

Structural planning: Engineering office Krone

Contact architect in Venice: cfk Architetti

Sponsors:

ZUMTOBEL

Alfred Herrhausen Gesellschaft das internationale Forum der Deutschen Bank

carpetconcept

Corian

Hasenkopf

PECA - Verbundtechnik

Wilhelm Layher

Vitra

Medias:

archplus

Baunetz

Fact sheet

Exhibition location:
German Pavilion at the Giardini, Venice

Exhibition period:
September 10th - November 19th 2006

Opening hours:
daily from 10 am to 6 pm

Preview days:
September 7th - 9th 2006

Pressconference and opening of the German Pavillon:
September 8th 2006

1st exhibition day for the public:
September 10th 2006

Organiserr:
Bundesministerium für Verkehr, Bau und Stadtentwicklung

General commissioners:
Armand Gruentuch and Almut Ernst

Websites:
www.architekturbiennale.de
www.convertiblecity.de
www.labiennale.org

Contact:
Phone: 0049 (0)30 308 77 88
Fax: 0049 (0)30 308 77 87
presse@convertiblecity.de
info@convertiblecity.de

Catalogue:
The exhibition catalogue is published in the form of a special issue of the German architecture magazine „arch-plus“ especially designed and edited by the general commissioners, Armand Grüntuch and Almut Ernst.

Supporting programme:
A supporting programme goes along with the exhibition themes.